

YOUR AUSPICIOUS DATES
FOR THE PERIOD
Jun 25, 2015 to Jan 05, 2016
FOR OPTIMIZING YOUR LUCK
IN THE GAMES OF CHANCES



Authentic Destiny
<http://www.adeptiny.com>
25 June, 2015

Your BaZi Master
Richard Tan, FCCA, CAM
Email: rtan@adeptiny.com

1 Introduction

BaZi or the 4 Pillars of Destiny is the most relevant system used by the Chinese to predict an individual's destiny and can recommend lucky days with precision for him to try his luck in the game of chances such as speculation, betting and gambling. This system uses the principles of the 5 basic elements to predict a person's favorite elements. His lucky days are represented by his favorite elements and during that particular day and moment he is having the best form to conduct his punting, betting and gambling activities smoothly with confidence, vigor, enthusiastic, alert and he is likely to encounter good luck compared with normal days.

Luck does not come randomly as most people perceived but actually it comes in a fairly fixed and predictable pattern that can be ascertained according to one's personalized BaZi. Luck should not be generalized but only personalized, when one encounters a lucky day it is not also necessarily being experienced in the same manner by another person since each individual has his personalized BaZi. According to this Chinese metaphysics only one person in 12.96 millions of the human race has an identical destiny. Hence, for one to know his luck he needs to provide us his date, time and place of birth and gender too, so that we can precisely provide him a list of personalized lucky days to assist him. However, complications arise due to the level of the luck required and it also depends on the types of game of chances for him to try out his luck since their odds vary drastically.

We have tested this program and obtained satisfactory results on the numerous occasions conducted over a period of time by Richard Tan, his friends and acquaintances before developing and implementing this program. This program is relevant for fortune seeker, punter and gambler to find out his lucky days before trying out his luck in the games of chances, punting activities like speculation or betting so that he can optimize his luck.

The various lucky days recommended by us are personalized ones. So one has an advantage over others if he chooses his lucky days before trying out his luck for speculation, betting and gambling activities. This special program was specifically designed by Master Richard Tan, who identifies one's favorite elements derived from his personalized BaZi, Then he matches the favorite element with the day which is consider lucky to assist him in his speculation, betting and gambling activities. Our recommendation for one's personalized lucky days are precise and the possibility of winnings are high, subject to one must also follow the rules provided in the report.

You can get this special service online now by paying US\$13.88 and you are given the list of lucky days for the next 6 months. This special Lucky Days report can be obtained from our website <http://www.adeviny.com>.



2 Report on Dates & Hours For Trying Your Luck in the Games of Chances

The auspicious dates and time recommended below are personalized ones after critically examining your birth data using BaZi or the Four Pillars of Destiny

2.1 Part A Section 1

This section only recommends auspicious dates falling within an excellent Moderated Monthly Indices shown in Figure 3-1

Please refer to Table 2-1 for the recommended dates and time

You may try your luck for games classified as **Group A, B, C and D** as tabulated in **Appendix B**. For details see Appendix A on Gambling Notes & Types of Games for trying your luck.



Table 2-1

| Recommended Dates | Auspicious Hours ¹ |
|---|---|
| <p>2015</p> <p>December: 09, 12, 13, 14, 15, 18, 21, 24, 25, 26, 27, 30</p> | <p>9.00 pm to 1.00 am</p> <p>1.00 am to 3.00 am</p> <p>7.00 am to 9.00 am</p> |
| <p>2016</p> <p>January: 02, 05</p> | <p>1.00 pm to 3.00 pm</p> <p>7.00 pm to 9.00 pm</p> |

¹ Note : The auspicious hours recommended should follow the Local Mean Time of the place where the gaming activity is conducted

2.2 Part A Section 2

This section only recommends the series of auspicious dates falling within a specified period upon you encountering such an excellent Luck as a result of the Seasonal/Compatible combination, if any.

You may try your luck for games classified as **Group A, B, C and D** as tabulated in **Appendix B**. For details see Appendix A on Gambling Notes & Types of Games for trying your luck.

(However, during this period under review you do not encounter such special luck as a result of the seasonal or compatible combination to give you such excellent luck period. You should refer to the following sections for other relevant auspicious dates if any, for testing your luck in respect of other types of games of chances where the odds are much lower. The other sections with the recommendation of such dates, if any, should be adopted for your action.)

You do not have any days in this category for the 6 months under review

2.3 Part B Section 1

This section only recommends mixed dates falling in an excellent Moderated Monthly Luck Indices shown in Figure 3-1.

Please refer to Table 2-2 for the recommended dates and time

You may try your luck for games classified as **Group A, B and C** as tabulated in **Appendix B**. For details see Appendix A on Gambling Notes & Types of Games for trying your luck.

Table 2-2

| Recommended Dates | Auspicious Hours ¹ |
|---|---|
| <p>2015</p> <p>December: 10, 11, 22, 23</p> | <p>9.00 pm to 1.00 am</p> <p>1.00 am to 3.00 am</p> <p>7.00 am to 9.00 am</p> |
| <p>2016</p> <p>January: 03, 04</p> | <p>1.00 pm to 3.00 pm</p> <p>7.00 pm to 9.00 pm</p> |

¹ Note : The auspicious hours recommended should follow the Local Mean Time of the place where the gaming activity is conducted

2.4 Part B Section 2

This section only recommends auspicious dates falling within a good Moderated Monthly Luck Indices shown in Figure 3-1.

Please refer to Table 2-3 for the recommended dates and time

You may try your luck for games classified as **Group A, B and C** as tabulated in **Appendix B**. For details see Appendix A on Gambling Notes & Types of Games for trying your luck.

Table 2-3

| Recommended Dates | Auspicious Hours ¹ |
|--|--|
| 2015 | |
| June: 06, 09, 12, 15, 16, 17, 18, 21, 24, 27, 28, 29, 30 | 9.00 pm to 1.00 am 1.00 am to 3.00 am 7.00 am to 9.00 am |
| July: 03, 06, 09, 10, 11, 12, 15, 18, 21, 22, 23, 24, 27, 30 | 1.00 pm to 3.00 pm 7.00 pm to 9.00 pm |
| August: 02, 03, 04, 05, 08, 11, 14, 15, 16, 17, 20, 23, 26, 27, 28, 29 | |
| September: 01, 04, 07 | |
| October: 10, 13, 14, 15, 16, 19, 22, 25, 26, 27, 28, 31 | |
| November: 03, 06, 07, 08, 09, 12, 15, 18, 19, 20, 21, 24, 27, 30 | |
| December: 01, 02, 03, 06 | |

¹ Note : The auspicious hours recommended should follow the Local Mean Time of the place where the gaming activity is conducted

2.5 Part C Section 1

This section only recommends certain mixed days falling within a good Moderated Monthly Luck Indices shown in Figure 3-1.

Please refer to Table 2-4 for the recommended dates and time

You may try your luck for games classified as **Group A and B only** as tabulated in **Appendix B**. For details see Appendix A on Gambling Notes & Types of Games for trying your luck.

Table 2-4

| Recommended Dates | Auspicious Hours ¹ |
|---|--|
| 2015 June: 13, 14, 25, 26 July: 07, 08, 19, 20, 31 August: 01, 12, 13, 24, 25 September: 05, 06 October: 11, 12, 23, 24 November: 04, 05, 16, 17, 28, 29 | 9.00 pm to 1.00 am 1.00 am to 3.00 am 7.00 am to 9.00 am 1.00 pm to 3.00 pm 7.00 pm to 9.00 pm |

¹ Note : The auspicious hours recommended should follow the Local Mean Time of the place where the gaming activity is conducted

2.6 Part C Section 2

This section only recommends good days falling within a mixed Moderated Monthly Luck Indices shown in Figure 3-1.

Please refer to Table 2-5 for the recommended dates and time

You may try your luck for games classified as **Group A only** as tabulated in **Appendix B**. For details see Appendix A on Gambling Notes & Types of Games for trying your luck.

Table 2-5

| Recommended Dates | Auspicious Hours ¹ |
|---|---|
| <p>2015</p> <p>September: 08, 09, 10, 13, 16, 19, 20, 21, 22, 25, 28</p> <p>October: 01, 02, 03, 04, 07</p> | <p>9.00 pm to 1.00 am</p> <p>1.00 am to 3.00 am</p> <p>7.00 am to 9.00 am</p> <p>1.00 pm to 3.00 pm</p> <p>7.00 pm to 9.00 pm</p> |

¹ Note : The auspicious hours recommended should follow the Local Mean Time of the place where the gaming activity is conducted

2.7 Part C Section 3

This section only recommends certain mixed days falling within a mixed Moderated Monthly Luck Index shown in Figure 3-1.

Please refer to Table 2-6 for the recommended dates and time

You may try your luck for games classified as **Group A only** as tabulated in **Appendix B**. For details see Appendix A on Gambling Notes & Types of Games for trying your luck.

Table 2-6

| Recommended Dates | Auspicious Hours ¹ |
|--|---|
| <p>2015</p> <p>September: 17, 18, 29, 30</p> | <p>9.00 pm to 1.00 am</p> <p>1.00 am to 3.00 am</p> <p>7.00 am to 9.00 am</p> <p>1.00 pm to 3.00 pm</p> <p>7.00 pm to 9.00 pm</p> |

¹ Note : The auspicious hours recommended should follow the Local Mean Time of the place where the gaming activity is conducted

3 Your Personalized Luck Bar Chart

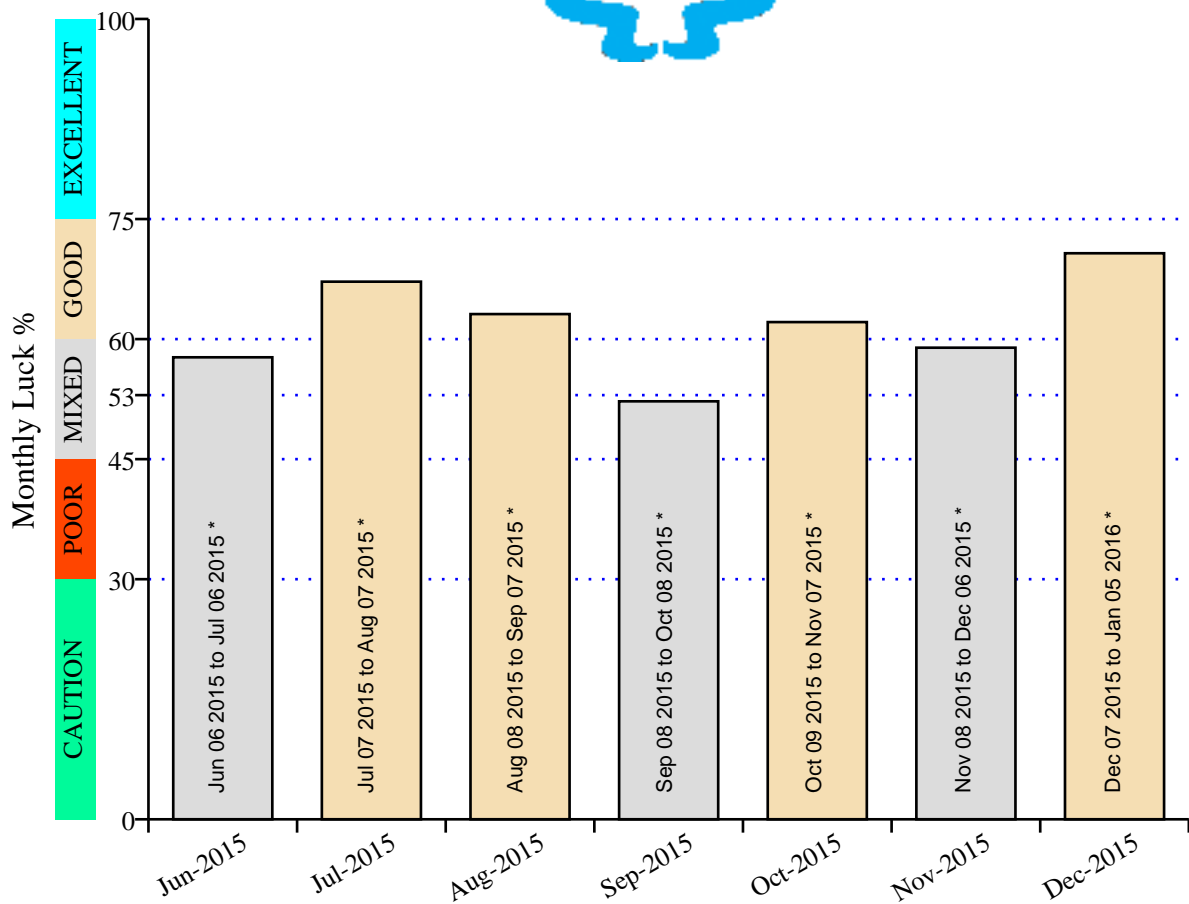
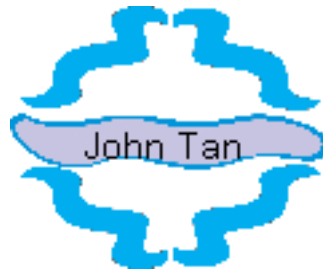


Figure 3-1 - Moderated Monthly Luck Indices

Note* : Hsia calendar month start and end

Source : <http://www.adevity.com>

By : Master Richard Tan

4 Best Directions and Colors

To enhance your luck you should adopt the following suggestions:

a) Sitting/facing directions :

1. North
2. Northeast, Southeast, Southwest, Northwest

b) Wearing the right cloth colors:

1. Black, Grey, Dark Blue
2. Yellow, Beige, Light Brown

5 Exemption Clause

The information and recommendation given on this report on the selected dates and time is based on your personalized BaZi using the 4 Pillars of Destiny. We have taken reasonable care to ensure that our advice and recommendations given are exercised with caution and professionalism through our extensive research, case studies and in-depth knowledge on the 4 Pillars of Destiny by expounding its theories and using our years of practical experience for the benefit of our clients. However, no liability can be accepted by us for any loss arising from the use of this report and any action taken is your personal responsibility and at your own risk. We do not condone, solicit, encourage, convince, induce or tempt others to involve and participate in any form of gambling, betting or speculative activities. The report on the auspicious dates recommended is based on your birth data presented to us.

Appendix A - Gambling Notes

PART A: Section 1 and 2

The Recommended Dates in Part A indicate those Dates that you are likely to enjoy an auspicious phase as you are expected to encounter a Good or Excellent Moderated Monthly Luck period. Since you are in such an auspicious phase the Recommended Dates and Hours may enhance and increase your chances of making gains in your investments or even experiencing winnings on speculative activities. Therefore, you are advised to try your luck in gambling, betting or speculation only on the Recommended Dates and Specified Time on all types of gambling, investment and speculative activities listed in **Group A, B, C and D**. See Appendix B for the types of Games Groupings and Odds. Otherwise, you may not utilize your luck for your benefit by not following our report. Timing is the most important factor apart from skill for a gambler or investor to have an edge over others or for money making respectively in the long run. You should only put your bet on a chosen date and time since the bonanza or jackpot is very attractive but the chances of winning are very remote.

You can either maximize your winnings or minimize your losses provided you are a disciplined gambler and strictly adopt our Recommended Dates and Specified Hours for your actions. Otherwise, you may perceive that our Recommended Dates and Hours are not accurate or ineffective. Our advice is that you can try your luck on other normal days and compare the outcomes against your actions pertaining to our recommended Dates and Hours. You will be amazed by the contrasts of its outcome.

In any form of gambling or game of chances the odds are not in your favor since the total payout prizes only constitutes a fraction of the sum of the total odds of the game. Therefore, you should not bet or speculate all the time and you will stand to lose out in the long run. The only solution to circumvent such unfair practice is to place bet occasionally with precise timing once you are in good forms to beat the system. Our personalized advice is based on the assumptions that your birth data including the time of birth is correct and you have strictly adhered to follow our recommendations.

PART B: Section 1 and 2

The Dates and Timing recommended above are given to assist you in improving your chances of winning in gambling, making gains in investments or speculative activities for the types of games, investments and speculative activities categorized in **Group A, B and C** only. See Appendix B for the types of Games Grouping and its Odds. The reason being the state of your Moderated Monthly Luck Index is classified as Good only. You may invest in a mixed portfolios with higher weighting allocated for those medium beta stocks during this period. You

may also place bet, punt or speculate for those higher odds games, speculate in equities, derivatives, foreign currencies or commodities. However, you should stay away from putting bets for those games listed in Group D, since the possibility of striking a jackpot or bonanza needs an excellent luck. Though your luck is good it is still insufficient to enable you to strike a jackpot or bonanza for such payouts.

PART C: Section 1, 2 and 3

The Dates and Timing recommended above are given to assist you in improving your chances of winning, either in gambling or making gains in investments or speculative activities categorized in **Group A and B** only. See Appendix B for the types of Games Groupings and its Odds. The reason being the state of your Moderated Monthly Luck Index is moderate only. You should only gamble or bet with small stakes on those low odds games, invest or speculate on those low beta stocks, futures and derivatives as per our recommended dates. You are advised against placing bet, speculate for high odd games or actively speculating in equities, derivatives, foreign currencies or commodities, unless market sentiment warrants you to do so.

You are advised to abstain from putting bets on games listed in **Group C and D** or even in speculative activities let alone the possibility of you striking a jackpot or bonanza as the above recommended dates only meant for **Group A and B** only. You need an excellent or a very good luck period to increase your chances of striking such high betting odds.

You are advised to wear the recommended colors, gemstones, auspicious sitting direction and use your lucky numbers listed below to enhance your personalized feng shui since it may provide you the best energy level to conduct your gambling session with confidence, vigor, enthusiasm and alertness.

PART D

This list of Dates or phases indicates the specific period that you should stay away from gambling, betting and speculation if any. Due to your poor or lackluster state as categorized by your Moderated Monthly Luck Index you should abstain from any speculative activities temporarily until your luck improves. You may also need to restructure your investment portfolios by reallocating the higher beta into the lower beta stock or even dispose some of your current investment portfolios and convert them into fixed income instruments. You may seek the advice of your broker or financial consultant to advise you on the rescheduling of your investment portfolios for capital protection, if any. You have to wait until a time when your luck improves, as indicated by those Recommended Dates & Hours in **Part A and B** of the report.

By persevering you can save a lot of money on betting and also protect the value of your investment portfolios. You may only bet and/or restructure your investment portfolios for better capital appreciation of your investment values only when the

time is ripe. You may also continue your other betting or speculative activities in future once your luck warrants you to do so. Discipline, skill, capital, luck and timing are the most important ingredients for any gambler, punter or even investor to survive in the long run.

If one does not have self-discipline in adhering to such rules one should forget about making some gains through gambling, betting or speculation. He should concentrate on his career and ignored any temptation to follow other people who can make a living out of gambling.

Appendix B - Gambling - Games Groupings & Odds

Table B-1 - Types Of Betting/Punting/Gambling

Range of Odds in respect of betting/punting/speculative/gambling activities

| Stock Market, Derivatives, Bonds, Unit Trust and Games of Chances | Group A | Group B | Group C | Group D | Remarks (See Appendix B-1 for details) |
|--|----------------|------------------|-------------------|-------------------------|--|
| | Even to Low | Low to Medium | Medium to High | High to Very High | |
| 1) Invest/speculate in stock market, bonds or unit trusts | # | | | | See Note: 1a) & 1b) for the analysis of Odds & Risks |
| 2) Speculate in Equities, Derivatives, Currencies and Commodities | | # | | | See Note: 2 for the Odds & Risks involved in Speculations |
| 3) Bet in sports such as Athletics, Boxing, Golf, Football, Grey Hounds, Horse Racing, Motor Racing, Politics, Snooker, Tennis, US Football, etc | # | # | # | | See Note: 3 for the Odds & Payouts involved |
| 4) Casinos/Clubs/Social and Internet Gambling:- a) - Card Games like Poker, Blackjack, Baccarat, Banker-Player, Dominos, Mahjong, etc... | # | # | | | See Note: 4a), b) and c) in respect of the proportion of the Payouts depend on the Odds that the Casinos/Bookmaker policy on the return of the specific game and the accepted norms of the % payouts in order to remain competitive. |
| b) - Video Poker, Slot Machines, Roulette, Keno, Lotto, Number Forecast, etc ... | | # | # | | |
| 5) Betting Operators : - Bingo, Lotteries, Lotto, Pools, Number Forecast, Jackpots and Others | | | # | # | See Note: 5 for the Chances of striking (the Odds) and the Bonanza or Jackpot involved |

B.1 Gambling - Notes To The Games

1a) Investment in equity stock

Generally equity stock are broadly classified into 3 categories:

Blue Chips - are those stocks with low beta and the price volatility is less drastic and the rate of returns on capital invested are more certain but lower compared with Second Liner or Third Liner Stocks but having much higher beta. However, such stocks are consistent for its dividend payouts and the volatility of its market prices are also restricted. The chances of making decent returns on the investment for such stocks are much higher, though with a lower return yield, particularly on its capital appreciation in the short term. However, the probability of making a return is much higher in the long term and one may eventually make a decent rate of return.

Second Liners Stocks - are those stocks with higher beta than blue chips but lower than third liners stocks that have a higher beta. The market price volatility is modest compared with those blue chips or third liner stocks. However, such stocks do not have a consistent dividend payout compared to a blue chip. The chances of making a decent return on the investment of such stock is lower than a blue chip but higher than and a third liner.

Third Liner Stocks - are those stocks with high beta and experiencing a lot of volatility in its price movements, bearing both higher risk and higher return in the short term. Therefore, one should aware that the chances of making a return in capital gain is much lower but the rate of the capital appreciation in the short term is much higher compare with a blue chip or a second liner stock. The range of price volatility is like a yoyo and one can easily lose most of the original investment's value in the long term due to its speculative nature. It is classified as a speculation rather than an investment stock, so one should make a precise decision immediately, either profit-take or cut loss within the specified period the stock is in play, according to the market sentiment at that point in time. The certainty of making a gain is much lesser but the rate of the return is much higher, if any.

1b) Investment in fixed deposits, bonds, gilts and unit trusts

The general guideline is the interest rate on fixed deposit/bond is dependent on the risk of a default in honoring the interest payment or capital repayment according to the terms of the deposit or trust deeds. Normally bonds are rated by the accredited approved credit rating agencies before it is issued to the public for subscriptions and subsequently traded in the open market. As a rule the higher the payment of the interest rate on the bond the higher is the element of risk involved and the likeliness of a default in honoring the terms of the trust deeds by the bond issuer. Likewise, the lower the interest rate attached to the bond the lesser is the

risk of a default.

As for investment in unit trusts it is generally considered safer but not exciting compare with investment in the stock market conducted personally. The funds are managed by professional managers, regulated by the financial regulatory bodies and need to adhere to the guidelines specified, like restricting investment or only a certain amount in a stock. It may also require the spreads the risk by investing across a wide spectrum of stocks and other interest income investment instruments. The much lower but more stable rate of return is attributed by the much wider spread of the investment portfolios and the large fees payment made to the management of the fund.

2) Speculation in equities, derivatives, foreign currencies, commodities and Index Futures.

In the long-term one's speculation of such activities is likely to become poorer due to the uncertainties and the impacts of too many unpredictable world events, the element of manipulations and the unavoidable brokerage charges imposed on each transaction. Therefore, one should not have an open position all the time, as any happening in a major world event can affect the outcome and causes volatile fluctuation of the stocks or commodities prices or indices affecting your speculative activities. One should only get involve in these speculative activities unless he has good knowledge in that specific activity, good timing to enter or exit and the willingness to cut loss without hesitation. Therefore, such speculative activities are very risky and the chances of making a gain is very low in the long run.

3) Betting on sports or political events, such as Athletics, Boxing, Golf, Football, Grey Hounds, Horse Racing, Motor Racing, Politics, Snooker, Tennis, US Football and etc.

Usually a bookmaker undertakes bets from punters on any sporting or political events. The odds and payouts are fixed at a specific time only and will change the payout ratios from the time the event is open until the closing date and time of that event. The attractiveness of the prize payout is inversely proportionate to the odds involved. Thus, if a punter places a bet in favor of an underdog he is likely to be rewarded with a larger prize payout if there is an upset or the underdog wins. As a rule, the higher the payout, the higher is the odds for one to win. Likewise, the lower the odds are, the chances of winning also increases. We classified the odds into Group A, B and C.

4 Casinos, Clubs and Internet Gambling.

a) Table Games

Generally the odds of winning are slightly below 50%, depending on the types of table games. For poker, blackjacks, baccarat, banker-player, dominoes, mahjong

and others, the odds are considered slightly below even. Due to the imposition of the house rule, the banker or promoter's profit or commission involved, on overall aggregate chances for one to win is greatly reduced. We consider the chance of winning in the short term on average should range between 45 to 50%, and the longer the gambler prolong his gambling session the chance for him to win decreases as he gambles more. Take a simple dice game, the dice has six numbers, 1, 2, 3, 4, 5 and 6, so the probability of striking is one-sixth. However, the prize payout is a multiple of 4 times plus the refund on striking the correct number is 5 times. Presuming he places a fixed sum of the bet evenly on all the numbers per round he will stand to lose one-sixth or 16.6667%. So on average for every six rounds bet he loses one round of bet.

b) Video Games, Slot machines, Roulette, Lotto, Keno, Number Forecast and etc.

Generally the odds involved are much higher compared with table games but the prize payout is much higher. Since these are normally classified as computerized games except roulette, the operator or promoter implements a sophisticated program to attract punters by varying the prize payouts. However, the basic principle involved is that a certain amount of predetermined profit is built into the system of the game. The profit meant for the operator or promoter is the ratio of the total programmed payouts deducted from the total bets received is their profit. Therefore, one should realize that among all forms of gambling games these types of gambling are the most unattractive ones and most loop-sided games of all.

c) Internet Gambling.

With the advent of Internet more and more punters began to gamble through the Internet. Many websites are created to cater for such demand since it is very lucrative. The types of games offered are quite similar to those operated by any casino. These online gambling also offered competitive payouts similar to those expect Las Vegas Casinos. One may open an account with the operator of a website using his credit card for any transaction done.

5) Betting operators of pools, lotteries, lotto, jackpots, number forecasts and huge bonanza game payouts.

Operators of such betting activities normally conduct them on a colossal scale with the expectation of the participation of the entire population at large, and normally conduct a draw once a fortnight. They need very large number of participants in taking up the tickets issued depending on the total bonanzas payouts and can only conduct a few draws a year. Each draw's payouts are dependent on the overall tickets collections. Normally a certain portion of the prize money is allocated to the pool reserved for the first prize. The odds of striking the bonanza depends on the first prize bonanza plus the total sum of the other consolation prizes. It can range from a few thousands to a billion of local currencies depending on the types of

lotteries conducted. Most punters are attracted to such games but one should not place hope of becoming an instant multi-millionaire, though someone bounds to become one.